

Dr. VISWANATHAN
 J.N. College, Vadubur
 Clubs - XII

STRUCTURE OF SPERMIS

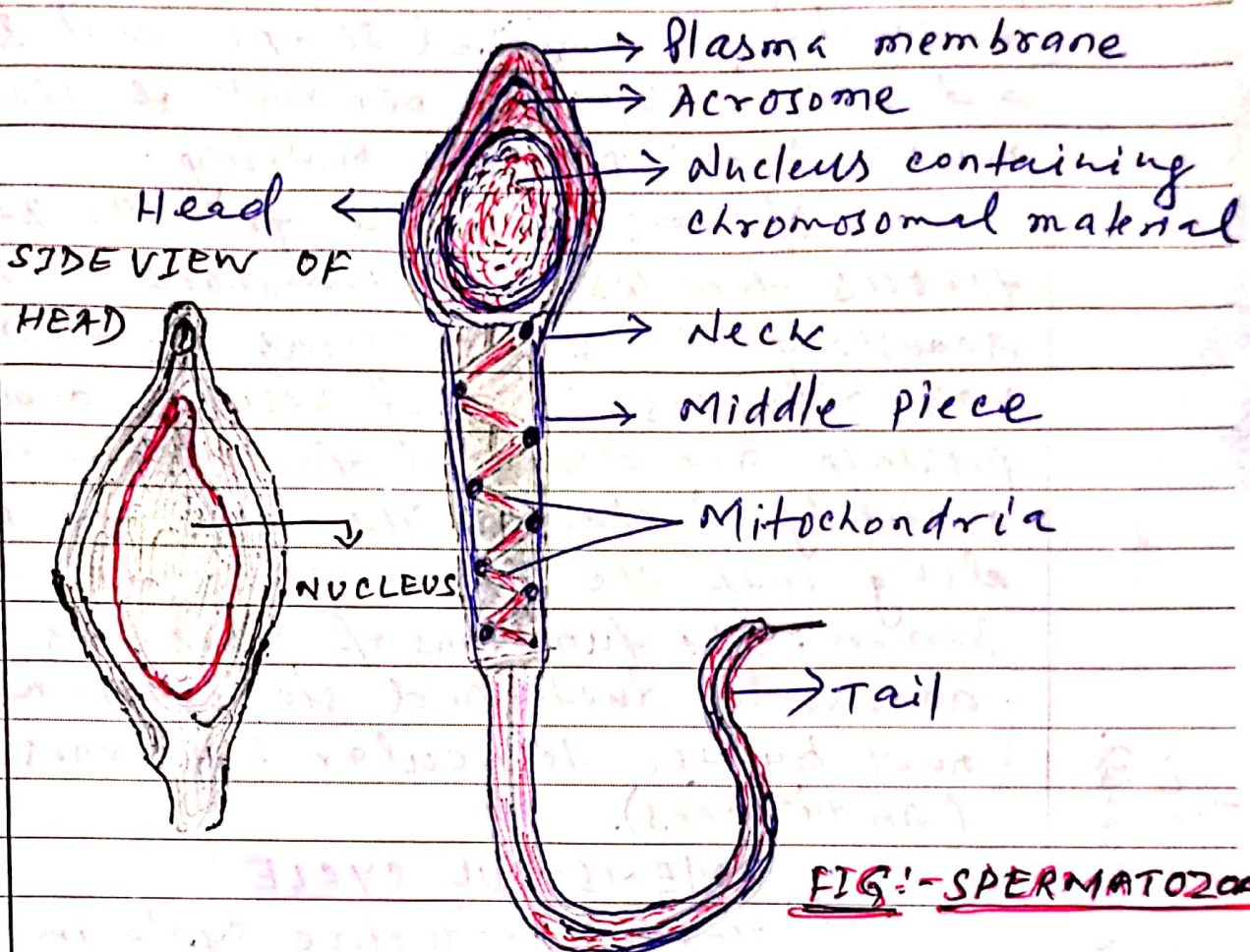


FIG:- SPERMATOZOAN

sperm is microscopic structure composed of Head, neck, a middle piece and a tail. A plasma membrane envelops the whole body of sperm. The sperm head contains an elongated haploid nucleus, the anterior portion of which is covered by cap like structure, acrosome. The acrosome is filled with enzymes that help fertilization of the ovum. The middle piece possesses numerous mitochondria, which produce

energy for the movement of tail that facilitate sperm motility essential for fertilization. The human male ejaculates about 200 to 300 hundred million sperms during a coitus of which, for normal fertility, at least- 60 per cent sperm must- have normal shape and size and at least- 40 per cent of them must- show vigorous motility.

sperms released from the seminiferous tubules, are transported by the accessory ducts. Secretions of epididymis, vas deferens, seminal vesicles and prostate are essential for maturation & motility of sperms. The seminal plasma along with the sperms constitute the semen. The functions of male sex accessory ducts and glands are maintained by the testicular hormones (androgens).