

Dr. Rachana Shalini

Dept. of Botany

Class : Deg-I (Subs.)

Topic : General characters of Lichen (Contd.)

Lecture No. - 86

Date : 22/09/2020

General characters of Lichen :

• Fertilization in Lichen :

• The spermata fall on the protruding tip of trichogyne. The intervening wall between the spermatum and trichogyne dissolves, as a result, the male gamete passes to oogonium, where the fusion of gametes takes place.

After fertilisation, the fertilised oogonium develops into an apothecium or perithecium.

• The apothecium or Perithecium :

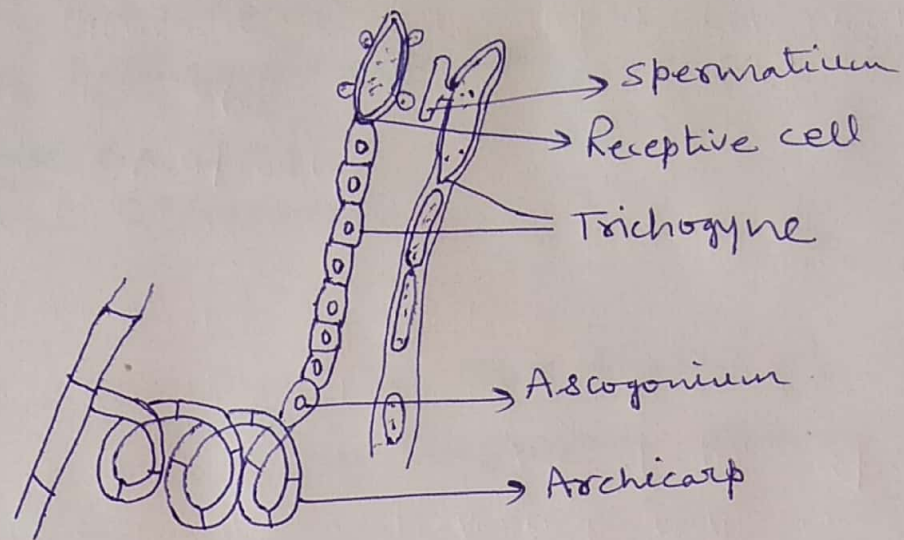
The apothecium is a fruiting body formed as a result of sexual genetic fusion.

It is a small cup like or disc like structure embedded or raised above the surface of the thallus by a short or long stalk.

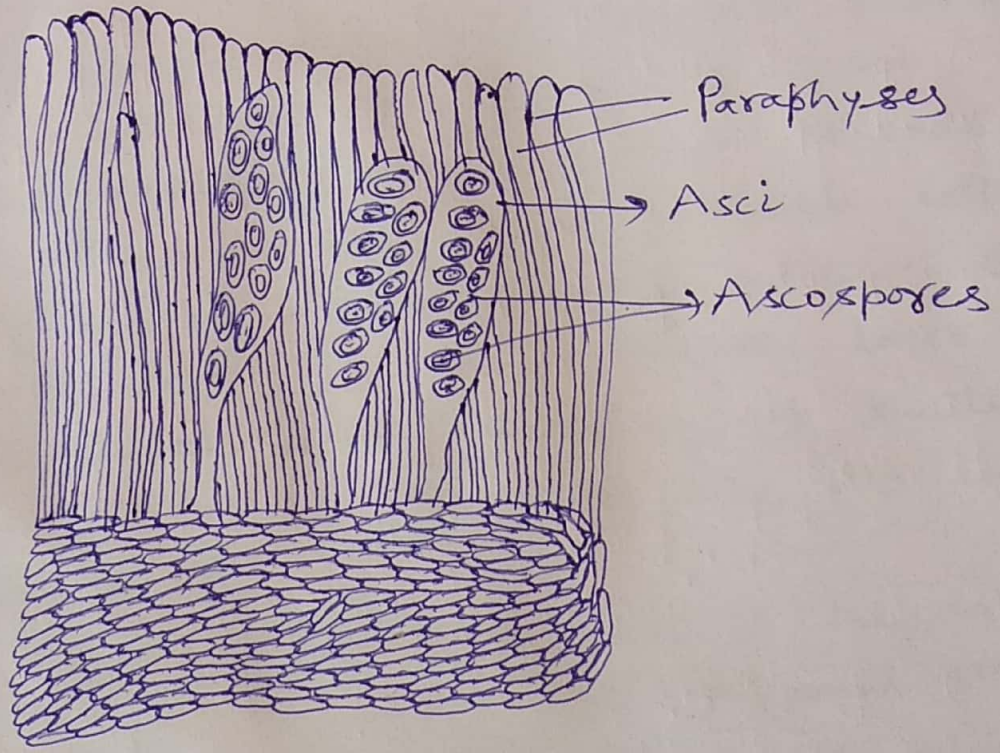
The internal structure of thallus is similar to the vegetative thallus consisting of upper and lower cortex and a central medulla.

The inner layer of apothecium is hymenium which is fertile bearing several asci and paraphyses growing vertically.

Each ~~ascus~~ ascus produces eight ascospores, which becomes two celled before dissemination. The asci are the resultant of sexual fusion.



(Fig: Fertilization in Lichen)



(Fig: Part of Apothecium in Lichen)

(continued - - -)